

Multi-format Video Server

MFPR-3100

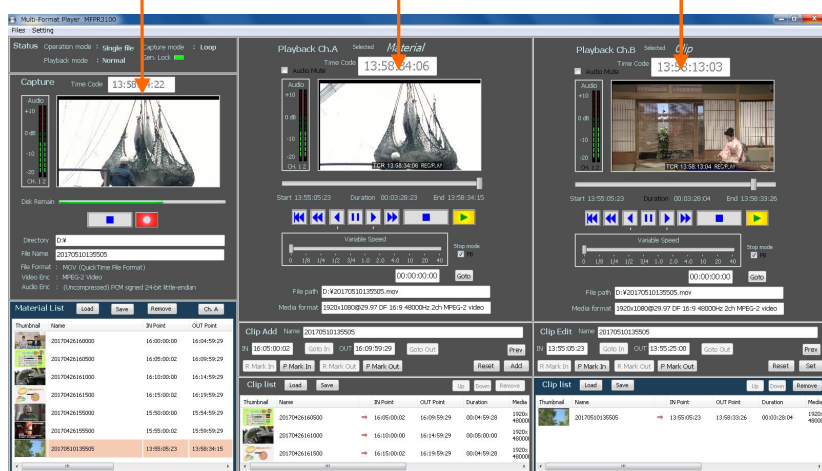
MFPR-3100 has one recording channel and two independent playback channels. An additional playback channel can be used to playback different files or to make highlight editing in parallel with the other channel is used for the PLAY while REC operation. It is suitable for an instant replay system in sports and all kind of races. Two channel outputs are suitable for concerts and exhibitions.



Recording side preview

Playback-A

Playback-B



Main functions

- SD/HD multi-standard recording and playback.
- Up to 8 TB SSD internal storage capacities.
- Direct recording and playback to external drives.
- Playback while recording.
- Endless loop recording.
- Seamless playback of plural files.
- Slow, shuttle, JOG, search.
- UDP remote control via Ethernet.
- Remote control from the RS-422 controllers. (OPTION)
- Gen-lock to the external reference (BB, Tri-level)
- RP-188 Embedded Timecode in/out.

Features

- Capture with MXF OP1a HD422, DNxHD, MPEG2, MJPEG.
- Playback files like XDCAM, P2, AVCHD, MPEG2, and Motion JPEG.
- Simultaneous record and play.
- Clip edit function and playlist playback.
- Endless loop recording.
- Time-shift playback with minimum delay time of less than one second.
- Two playback channels can be fully controlled separately.
- Monitor output can be used for the second line out with character inserter disabled.
- The PC clock can be used as the time code.
- The YYYY MM DD HH MM SS can be assigned as a file name.
- Remote control by the Ethernet (UDP) or the RS-422 (OPTION).
- High speed file transfer by the Gigabit LAN and the USB3.0 interface.

Applications

- Multi-format player for the linear editors. (News gathering).
- File base encoding and archiving of the VTR contents.
- Playlist playback of the MXF files from NAS servers.
- Simultaneous recording system by using the "LOOP recording" feature.
- Remote Surveillance System for science and disaster protection.
- Instant replay and sports slow motion by the "Play while recording" feature.

Recording time

TV standard	Encoding	Recording time VS Internal SSD capacity				
		500 GB	1TB	2TB	4TB	8TB
1080i/59.94	MPEG2	50 H	100 H	200 H	400 H	800 H
	Motion JPEG	22 H	44 H	88 H	176 H	352 H
	MXF HD422	18 H	36 H	72 H	144 H	288 H

(NOTE) Motion JPEG is VBR encoding. Recording time varies by picture complexity.

Specifications

Video input	HD/SD-SDI x1	
Video output	HD/SD-SDI x3 (OUT-A, OUT-B, MONI-OUT)	
TV standard	525/29.97 NTSC, 625/25 PAL 1080i/50, 59.94, 60 1080psf 23.98, 24, 25, 29.97, 30	
File format and encoding	(1) MOV MPEG2 (Data rate: Approx. 22 Mbps) (2) MOV Motion JPEG (Data rate: Approx. 50 Mbps) (3) MOV ProRes422 (Data rate: Approx. 200 Mbps) (4) MOV DNxHD (Data rate: Approx. 150 Mbps) (5) MXF OP1a HD422 (Data rate: Approx. 60 Mbps)	
Playback file format	AVI, MOV, MP4, MXF, MPEG2-TS, WMV	
Playback video coding	MPEG2, AVC-INTRA, MPEG4, ProRes422, DNxHD, AVCHD	
UP DOWN convert	Converted output in playback.	
Digital audio input	Embedded Audio (MAX 8-Ch)	
Digital audio output	Embedded Audio (MAX 8-Ch)	
Analog audio output	Stereo 3.5mm Head Phone Jack	
External reference signal	BB or Tri-level sync	
Time code input output	RP-188 HD-SDI Embedded TC (LTC, VITC)	
Storage	For DATA	SSD 500 GB (standard), Up to 8 TB (OPTION)
	For system	SSD 60GB
Interface	Display	HDMIx1
	USB2.0	Front x2
	USB3.0	Front x1, Rear x2
	LAN	RJ45 x1 (Gigabit Ethernet)
	REMOTE	RS-422 x2 Ethernet UDP control protocol
OS	Windows10 IOT Enterprise	
Power input	AC90-264V、47~63Hz	
Power consumption	Approx. 75W	
Environment	5- 35°C 5-85% (Non-condensing)	
Dimension	19-inch rack mount 1U 430(W) x 43.6(H) x 400(D)	
Weight	Approx. 7kg	

This specification is subject to change without notice.



Manufactured by: **Gigabit Systems Inc.**

7-25 Higashi-Kibougaoka, Asahi-Ku,

Yokohama, 241-0826 JAPAN

TEL: +45-390-5275 FAX: +45-364-2937

EMAIL: sales@gigabitsystems.com

URL: <http://www.gigabitsystems.com>

