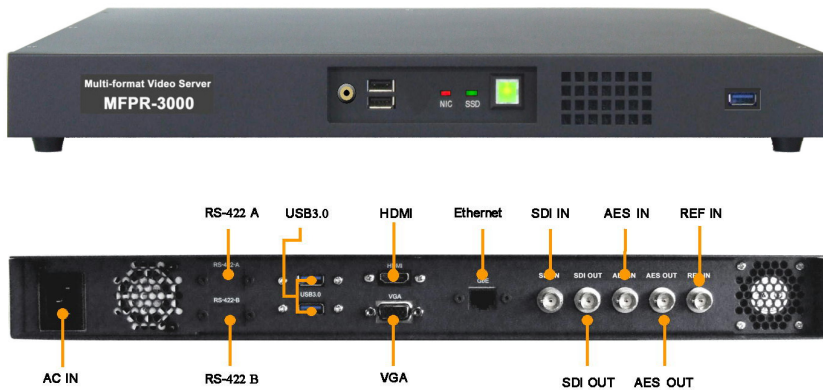


Multi-format Video Server

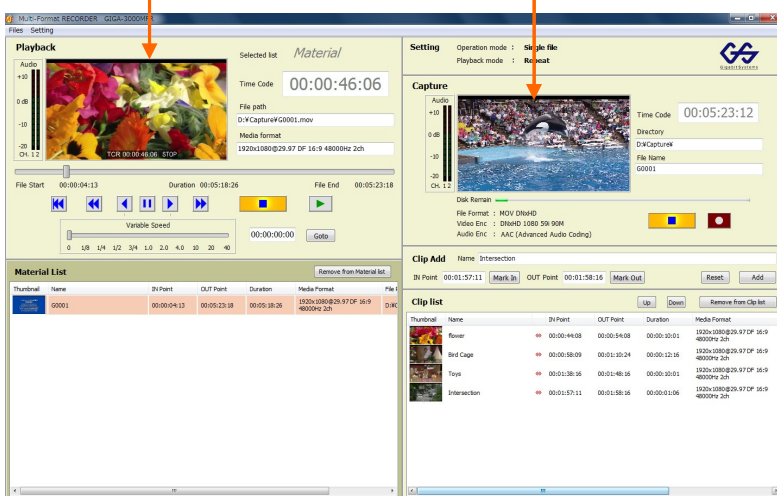
MFPR-3000

MFPR-3000 can capture the SDI input signal with industry-standard encoders like MXF OP1a HD422, Apple ProRes422 etc. You can playback variety of file formats like XDCAM, P2, ProRes, AVCHD, MPEG2, MPEG4 etc. VTR-like operation is possible from RS-422 controllers. You can use the “playback while recording”, and “loop recording” features.



Playback side preview

Recording side preview



Features

- Capture with MXF OP1a HD422, ProRes422, DNxHD, MPEG2, MJPEG.
- Playback files like XDCAM, P2, AVCHD, MPEG2, and Motion JPEG.
- Simultaneous record and play.
- In the LOOP recording, files can be switched with constant duration of 10 minutes or 1 hour. File switching is done seamlessly.
- The picture of “No video signal” is inserted in case of input missing.
- All recorded files can be readout after starting the application.
- The PC clock can be used as the time code.
- The YYYY MM DD HH MM SS can be assigned as a file name.
- Remote control by the Ethernet (UDP) or the RS-422 (OPTION).
- High speed file transfer by the Gigabit LAN and the USB3.0 interface.

Main functions

- SD/HD multi-standard recording and playback.
- Up to 4 TB SSD internal storage capacity.
- Direct recording and playback to external drives.
- Playback while recording.
- Endless loop recording.
- Seamless playback of plural files.
- Slow, shuttle, JOG, search.
- UDP remote control via Ethernet.
- Remote control from the RS-422 controllers. (OPTION)
- Gen-lock to the external reference (BB, Tri-level)
- RP-188Timecode in/out.

Applications

- Multi-format player for the linear editors. (News gathering).
- File base encoding and archiving of the VTR contents.
- Playlist playback of the MXF files from NAS servers.
- Simultaneous recording system by using the “LOOP recording” feature.
- Remote Surveillance System for science and disaster protection.
- Sports slow motion by the “Play while recording” feature.

Recording time

TV standard	Encoding	Recording time VS Internal SSD capacity				
		250 GB	500 GB	1TB	2TB	4TB
1080i/59.94	MPEG2	25 H	50 H	100 H	200 H	400 H
	Motion JPEG	11 H	22 H	44 H	88 H	176 H
	MXF HD422	9 H	18 H	36 H	72 H	144 H

(NOTE) Motion JPEG is VBR encoding. Recording time varies by picture complexity.

Specifications

Video input	HD/SD-SDI x1	
Video output	HD/SD-SDI x1	
TV standard	525/29.97 NTSC, 625/25 PAL 1080i/50, 59.94, 60 1080psf 23.98, 24, 25, 29.97, 30	
File format and encoding	(1) MOV MPEG2 (Data rate: Approx. 22 Mbps) (2) MOV Motion JPEG (Data rate: Approx. 50 Mbps) (3) MOV ProRes422 (Data rate: Approx. 200 Mbps) (4) MOV DNxHD (Data rate: Approx. 150 Mbps) (5) MXF OP1a HD422 (Data rate: Approx. 60 Mbps)	
Playback file format	AVI, MOV, MP4, MXF, MPEG2-TS, WMV	
Playback video coding	MPEG2, AVC-INTRA, MPEG4, ProRes422, DNxHD, AVCHD	
UP DOWN convert	Converted output in playback.	
Digital audio input	Embedded Audio (MAX 8-Ch) or AES/EBU (2-Ch)	
Digital audio output	Embedded Audio (MAX 8-Ch) and AES/EBU (2-Ch)	
Analog audio output	Stereo 3.5mm Head Phone Jack	
External reference signal	BB or Tri-level sync	
Time code input output	RP-188 HD-SDI Embedded TC (LTC, VITC)	
Storage	For DATA	SSD 250GB (standard), Up to 4 TB (OPTION)
	For system	SSD 60GB
Interface	Display	VGA x1, HDMI x1
	USB2.0	Front x2
	USB3.0	Front x1, Rear x2
	LAN	RJ45 x1 (Gigabit Ethernet)
	REMOTE	RS-422 x2 Ethernet UDP control protocol
OS	Windows Embedded Standard 7	
Power input	AC90-264V、47~63Hz	
Power consumption	Approx. 75W	
Environment	5- 35°C 5-85% (Non-condensing)	
Dimension	19-inch rack mount 1U 430(W) x 43.6(H) x 400(D)	
Weight	Approx. 7kg	

This specification is subject to change without notice.



Manufactured by: **Gigabit Systems Inc.**

7-25 Higashi-Kibougaoka, Asahi-Ku,

Yokohama, 241-0826 JAPAN

TEL: +45-390-5275 FAX: +45-364-2937

EMAIL: sales@gigabitsystems.com

URL: <http://www.gigabitsystems.com>

